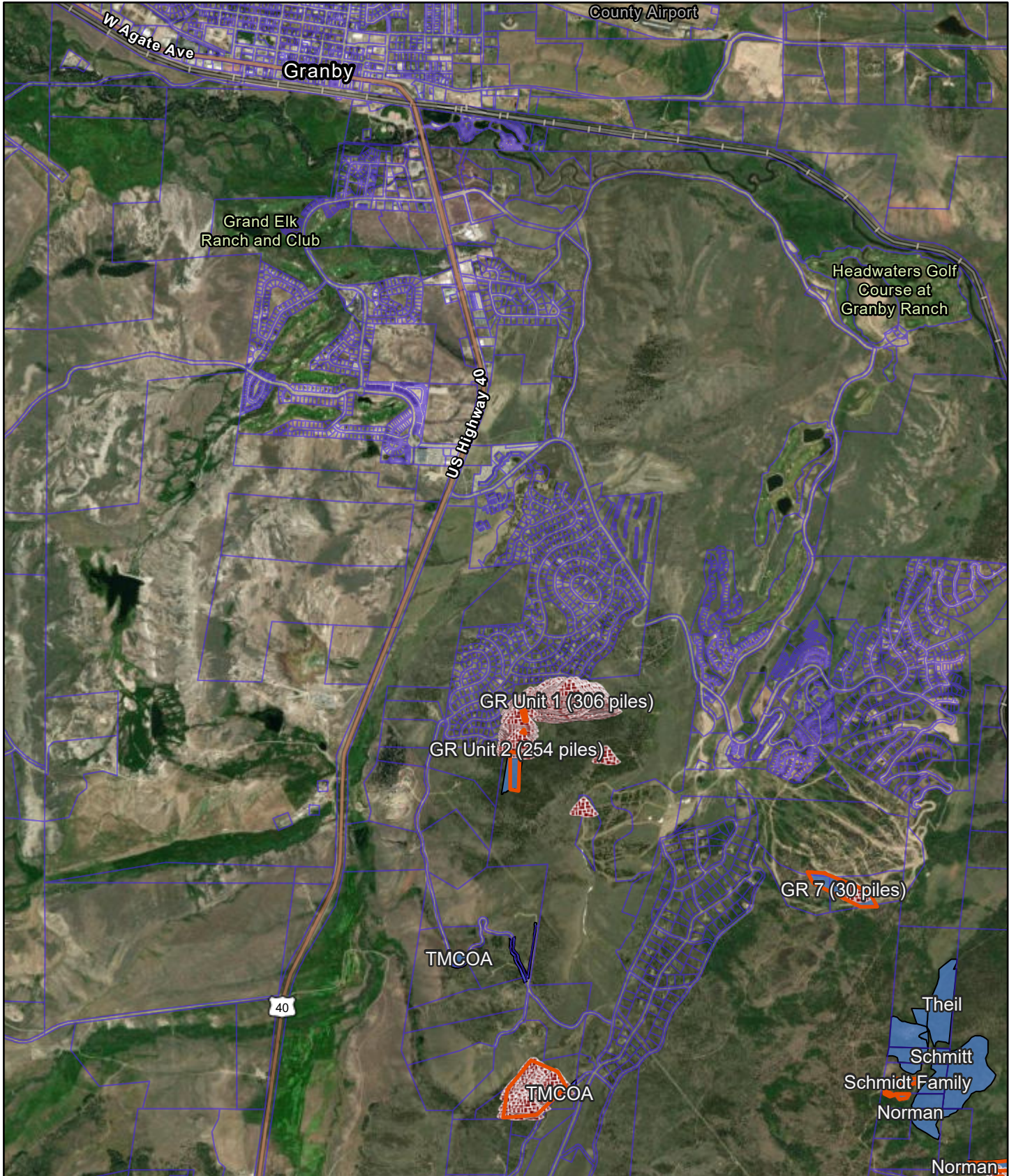


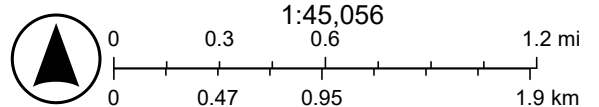
Grand Fire - 2024/25 Pile Burning



12/9/2024

-  Burn Pile Inventory Area
-  Burn Pile Inventory Point
-  Grand County Parcels
-  CoSWAP_Treatment
-  World Imagery

- Low Resolution 15m Imagery
- High Resolution 60cm Imagery
- High Resolution 30cm Imagery
- Citations
- 9.6m Resolution Metadata



Esri, TomTom, Garmin, SafeGraph, GeoTechnologies, Inc, METI/NASA, USGS, Bureau of Land Management, EPA, NPS, USDA, USFWS, Maxar